



THE MOUND

MÓRAHALOM SPA VILLAGE

Concept Presentation

6th June 2019 © Budapest
ArtGroup + LAB5 architects

ART
GROUP
LAB5

*“Lenn az Alföld tengersík vidékin
Ott vagyok honn, ott az én világom”*
Petőfi Sándor

*““Down on the see of the great Plain
there’s my world is my home...”*
Petőfi Sándor

CONTENT

- 01 Program
- 02 Guests and Functions
- 03 Location
- 04 Sustainability
- 05 Spa Village
- 06 Inspiration
- 07 Visualization

PROGRAM

200-250 KEYS RESORT VILLAGE

Accomodation:

- 100-150 units butique hotel
- Bar, lounge, lobby
- Reception, lobby, lounge, back office
- Restaurant and terrace
- Meeting rooms - connected to lobby and restaurants
- Guest restrooms
- Lockers, storage
- Wellness - pool, sauna, steam, massage
- Gym
- Changin cabinets
- Director, security, server, meeting room
- Staff service
- Kitchen
- Janitor's closet
- Laundry, dryer
- 200 parking places
- 50-100 units of apartments
- Flexible / grouped 150-250 m²/unit
- Multi-rooms, 100-150 m²/unit
- Single room, 2-3 f6, 50m²/unit

Community:

- Foodcourt and terrace
- Caffee and terrace
- Rented bikes and cars
- Stages
- Cinema, open air
- Public toilets
- Barber - hairdresser, beautician
- Shops (disponible spaces with terraces)
- Info point
- Children's zone, sitters and animators, workshops
- Playground
- Event hall - wedding, conference, meeting
- Small scale co-working
- Exclusive lounge
- Thermal water

Parking:

- Group-apartments: per units
- Separated garage for employees
- Multifunctional parking units for visitors (non-guest) and participants
- Underground garage accessible from the central buildings
- Green roof shaded ground floor parkings
- Parking lots spread around the public road, forested

02

GUESTS AND FUNCTIONS

GUESTS

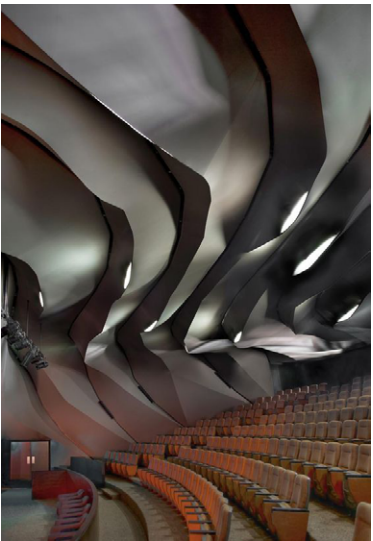


INFLUENCERS

Garance Dore
Patrick Janelle
Fabrizio Oriani

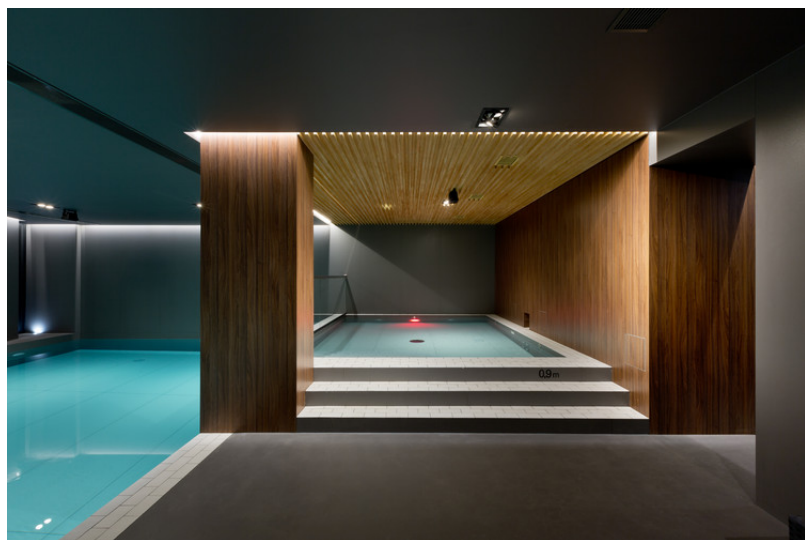


EVENTS

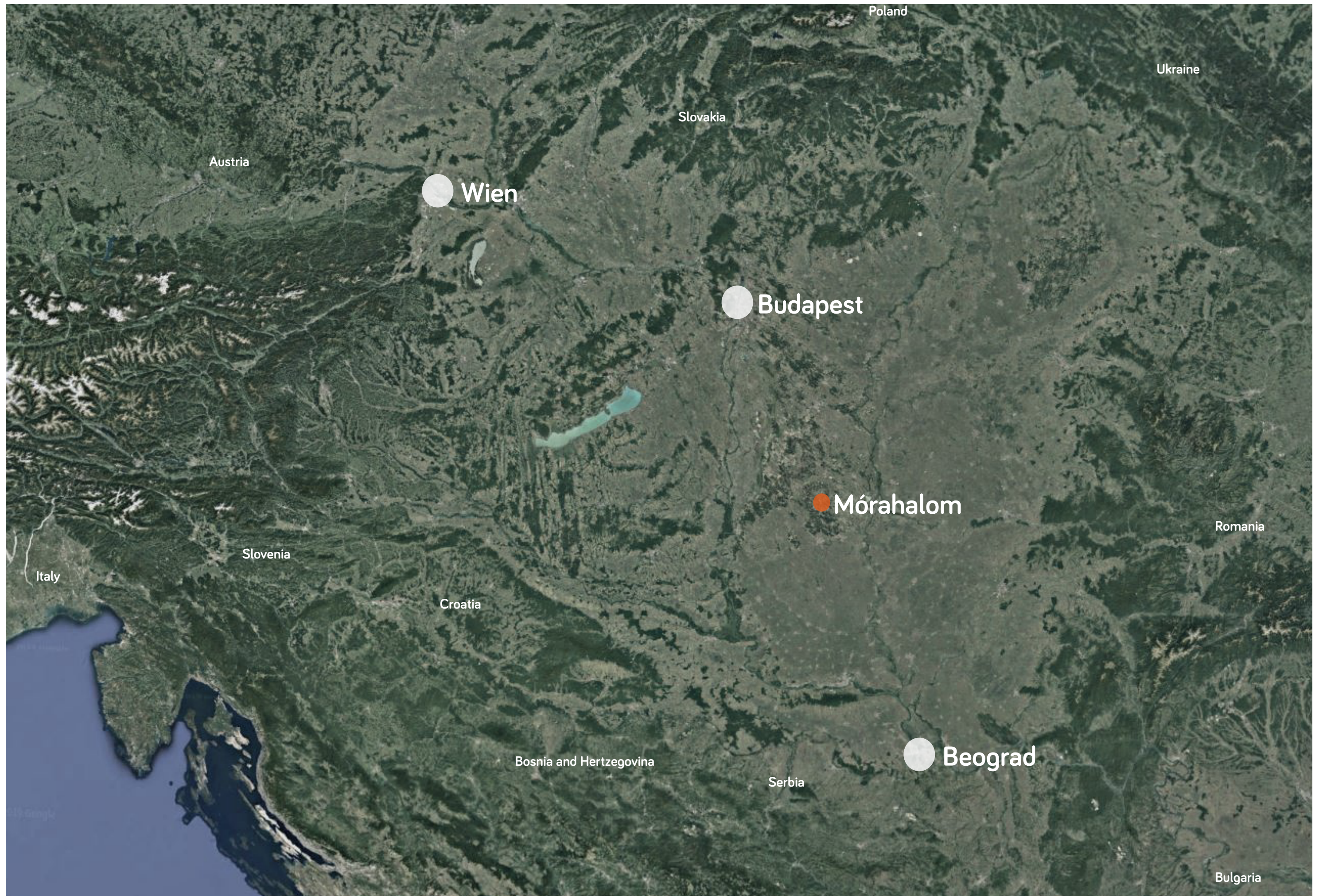


SPA

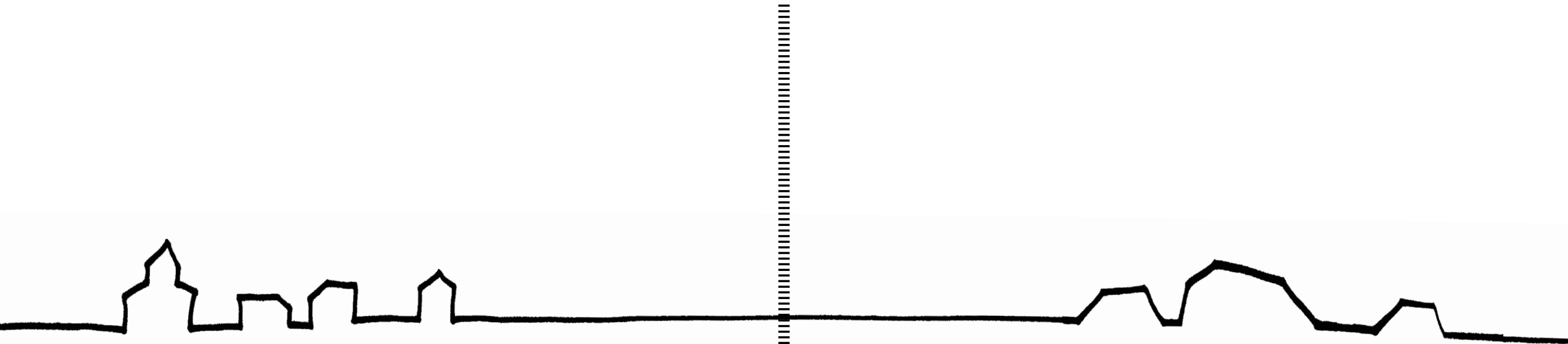




03 LOCATION







Mórahalom



Bath



Market



Coffee



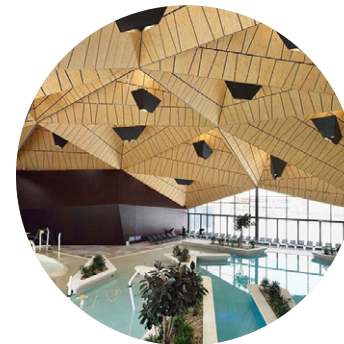
Small town



Peaceful



Concert



Spa



Hotel



Bar

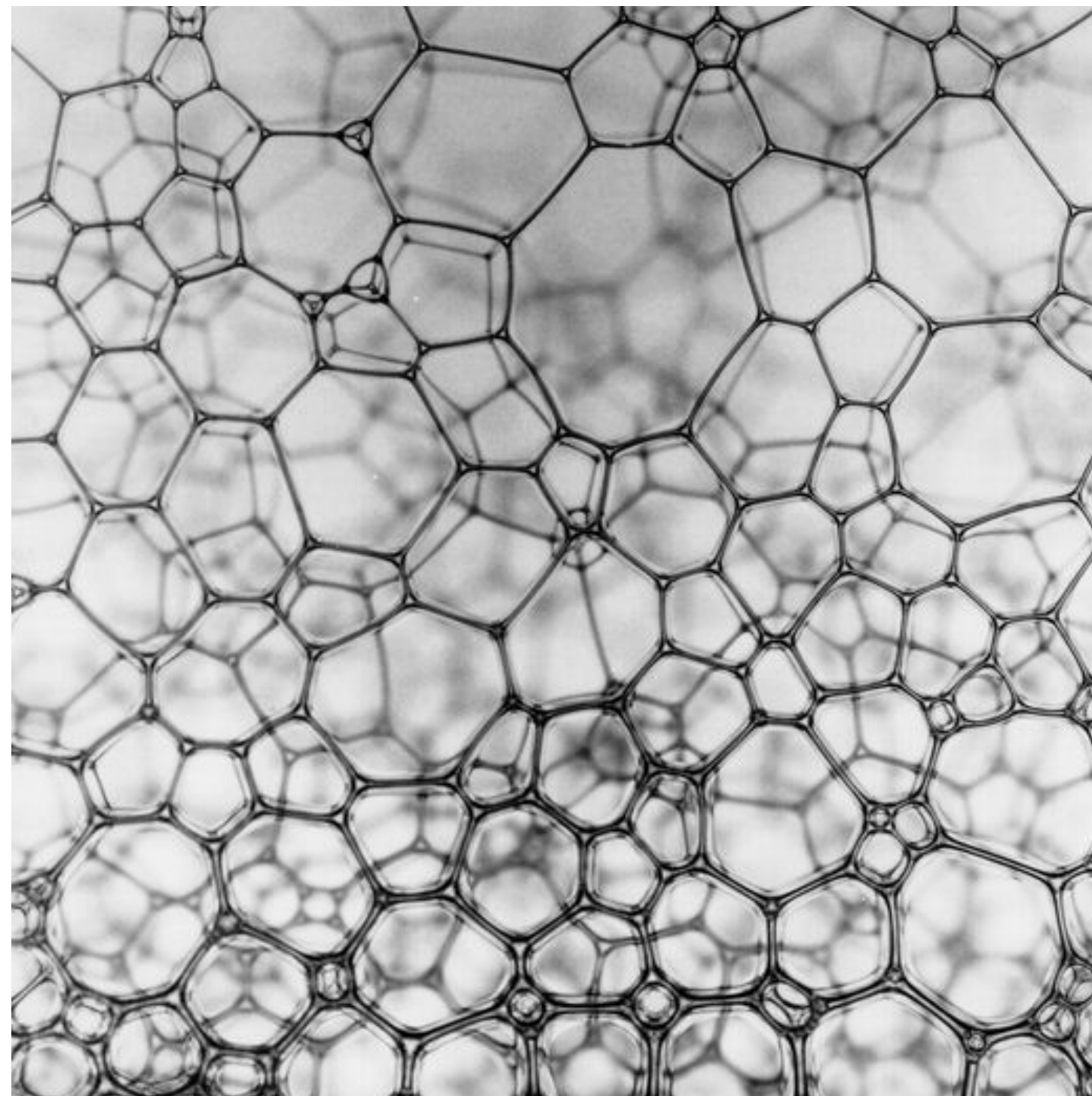


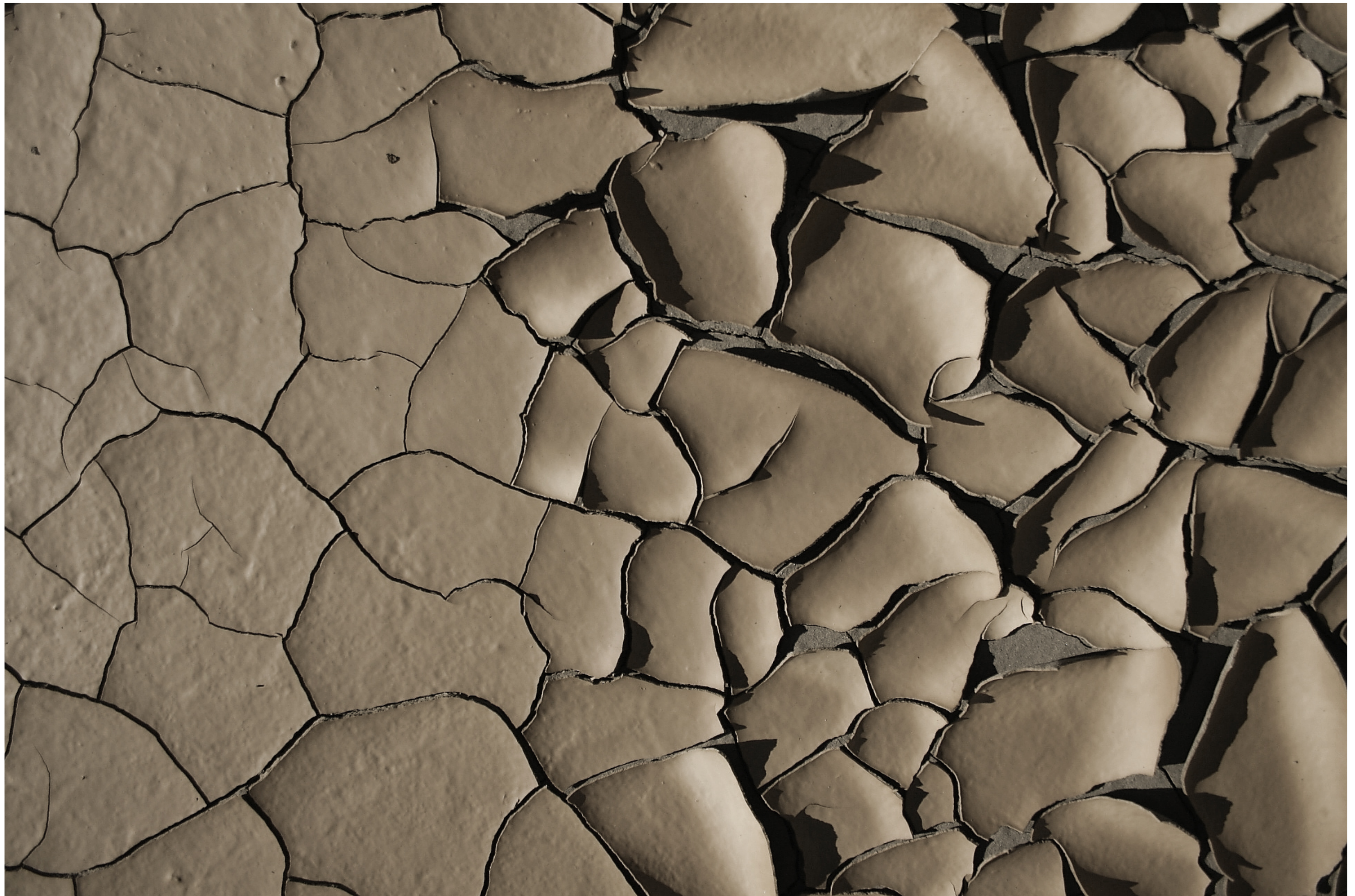
Wedding



Events

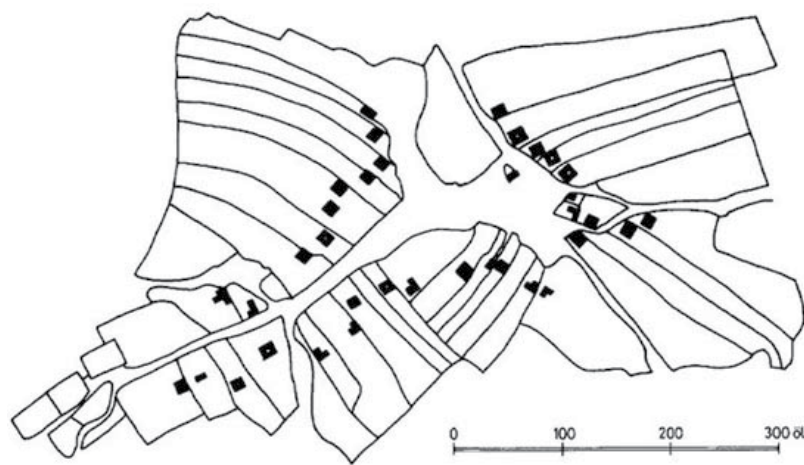


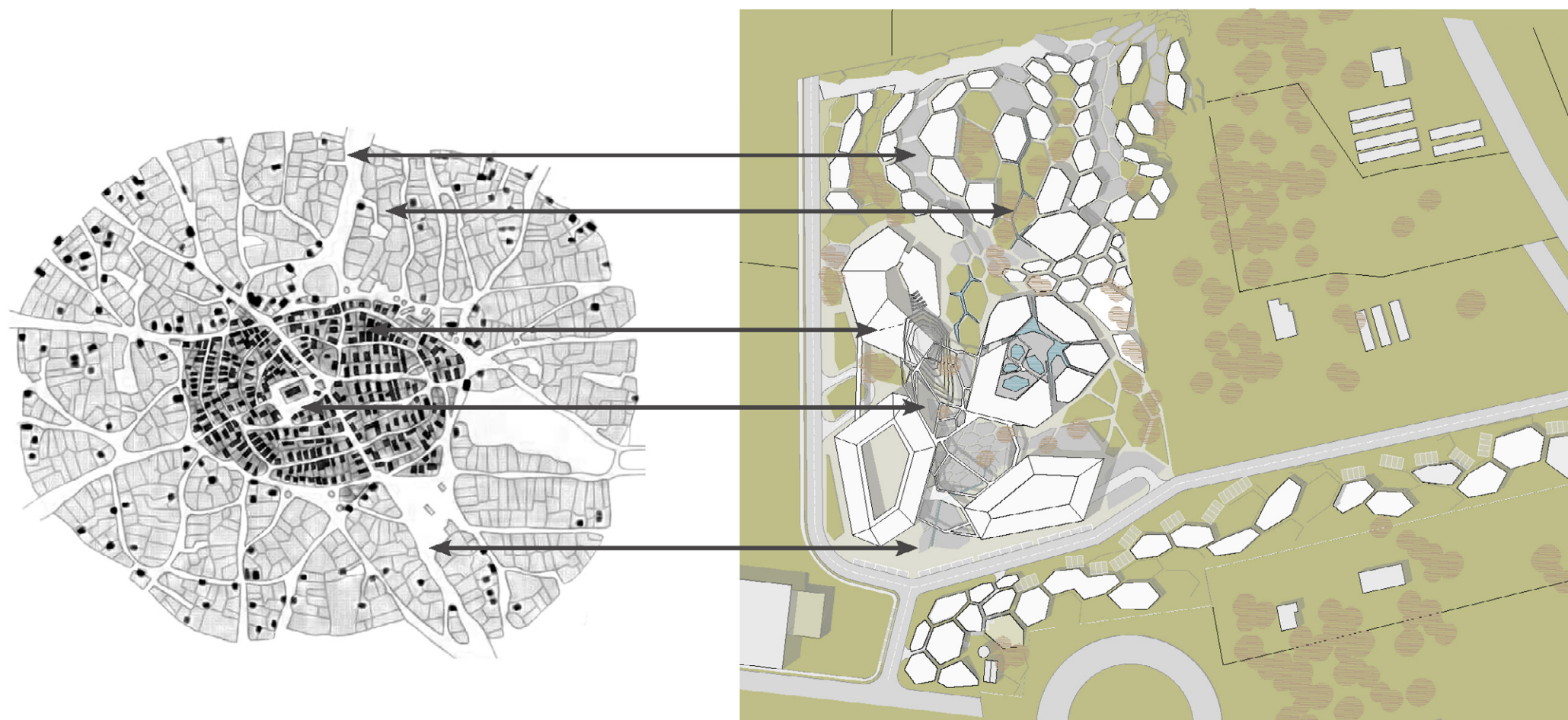






Traditional urban layouts on the Great Hungarian Plain





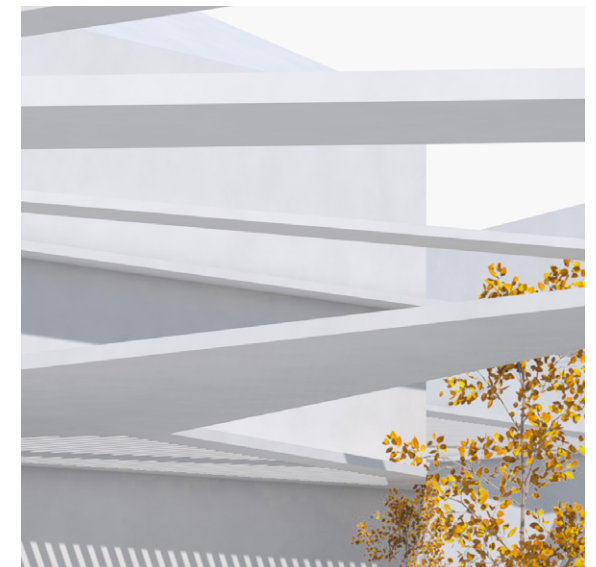
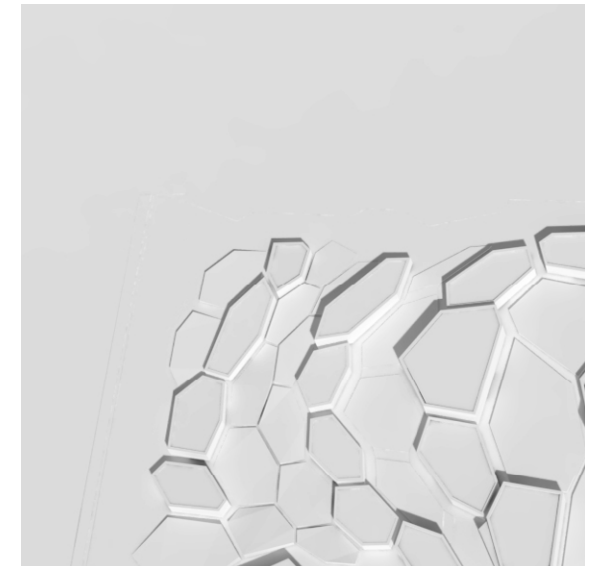
PAST



PRESENT



FUTURE



04

SUSTAINABILITY

RENEWABLES

Basic of the engineering plans:

All guests spending time here to leave a zero carbon footprint behind



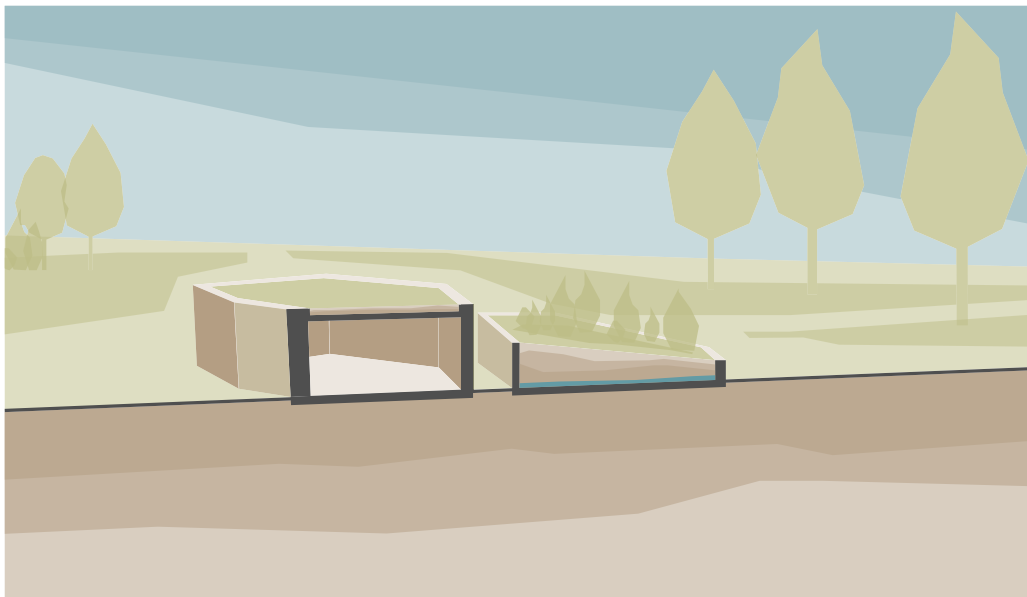
WIND ENERGY

- Wind mill power plant
- Smaller plants
- Ideal to minimize carbon consumption



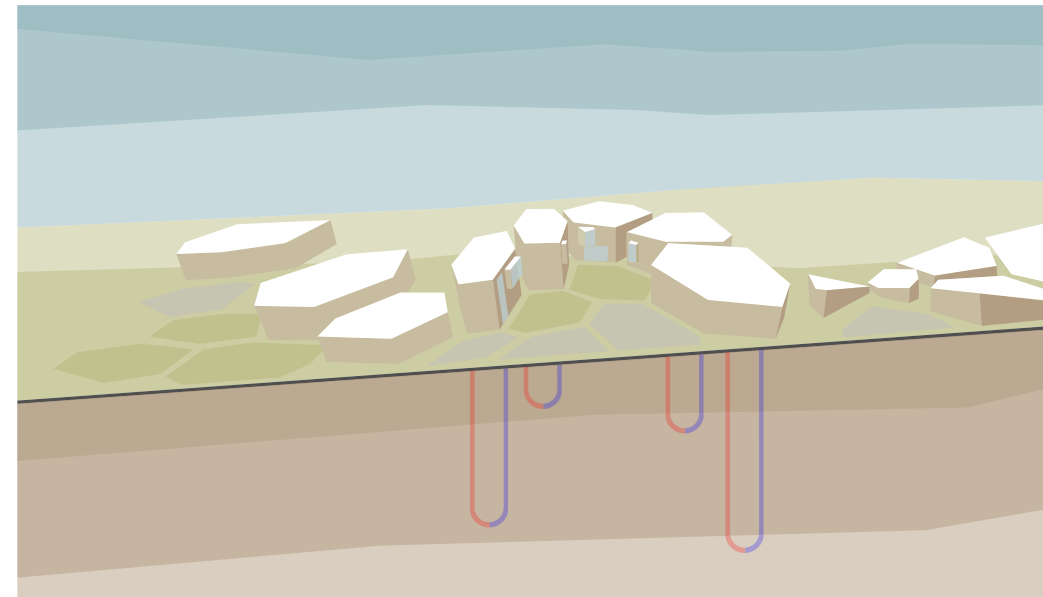
SOLAR ENERGY

- Solar power plant
- Best location in Hungary, installed in the neighbourhood
- Outstanding number of sunny days
- CO₂ neutral environment



GREEN ROOF AND RAIN WATER BUFFER

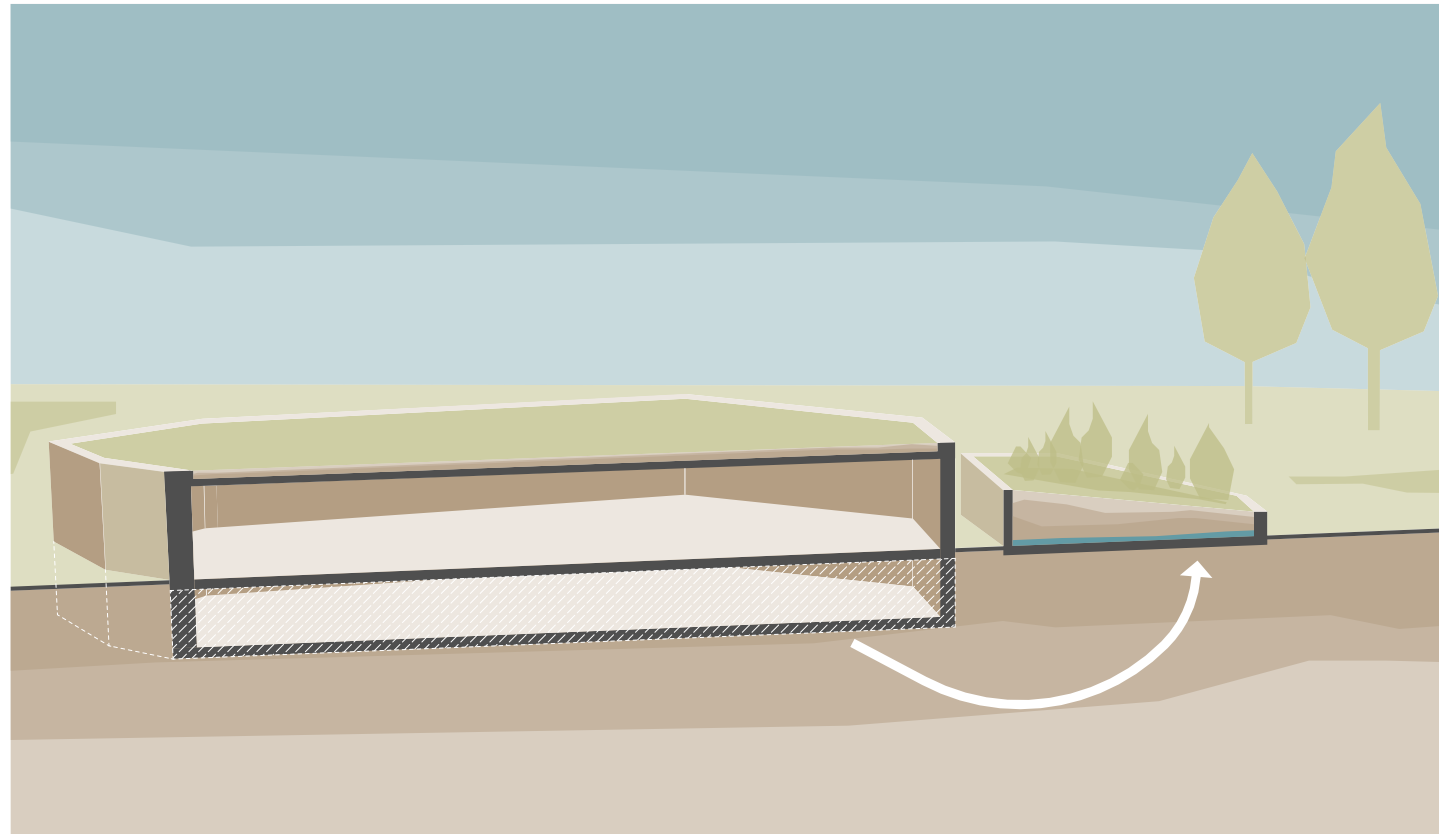
- Saving capacity in the existing sewery system
- Grey water usage (collected rain water)
- Protecting roof insulation, and heat-storage for winter
- Green surface reduces overhear risk during summertimes
- Green environment



GEO THERMIC ENERGY

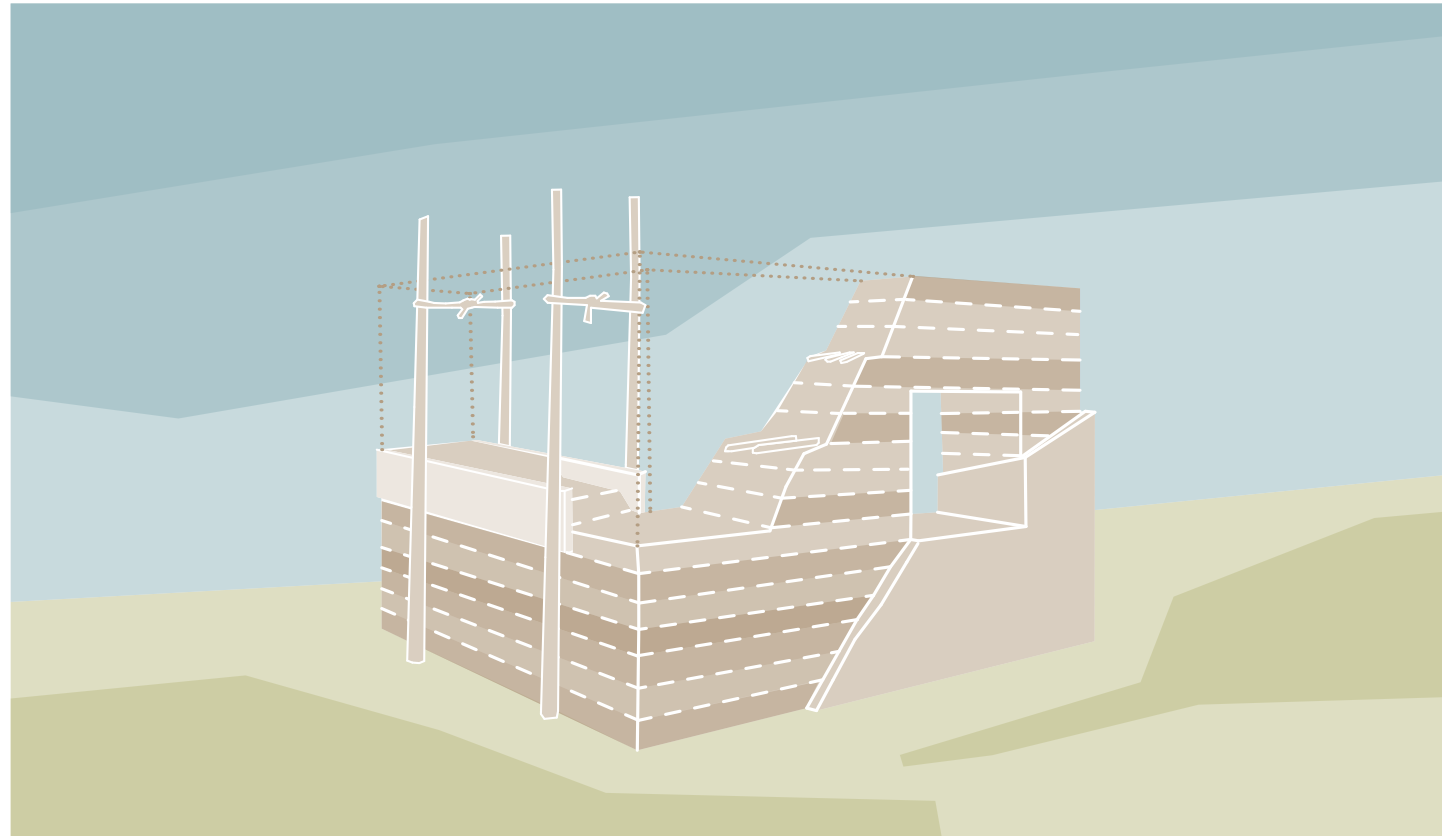
- Using the „energy of the earth”
- Using the capacity of the thermal water in situ

ENVIRONMENTAL-FRIENDLY CONSTRUCTION



EARTH-BALANCE

- Reduced load of soil transport
- Reusing local soil (wall, roof, infill)
- Great heat-storage and balance of humidity



CONSTRUCTION MATERIAL

- Rammed earth technology
- Smaller environmental foot print
- Using the local workforce
- Reinventing the traditional local construction methods
- Visible on the surface

TRADITION



TRADITIONAL MUD-WALL ARCHITECTURE OF THE HUNGARIAN PLAIN

- Local, ecological, reachable
- Need of local workforce and handcraft
- Breathing structure, great humidity balance

COOPERATION



HANDCRAFT



CONTEMPORARY



Max Dudler | visitor's centre | Germany, Bielefeld



Kurt & Mierta Lazzarini Architekten | residential | Switzerland



Bolthshauser Architekten | high school | Switzerland

RAMMED EARTH

- Synergy of concept, volume, and material
- Earth stabilized by cement, contemporary technology
- Natural surface, natural feels

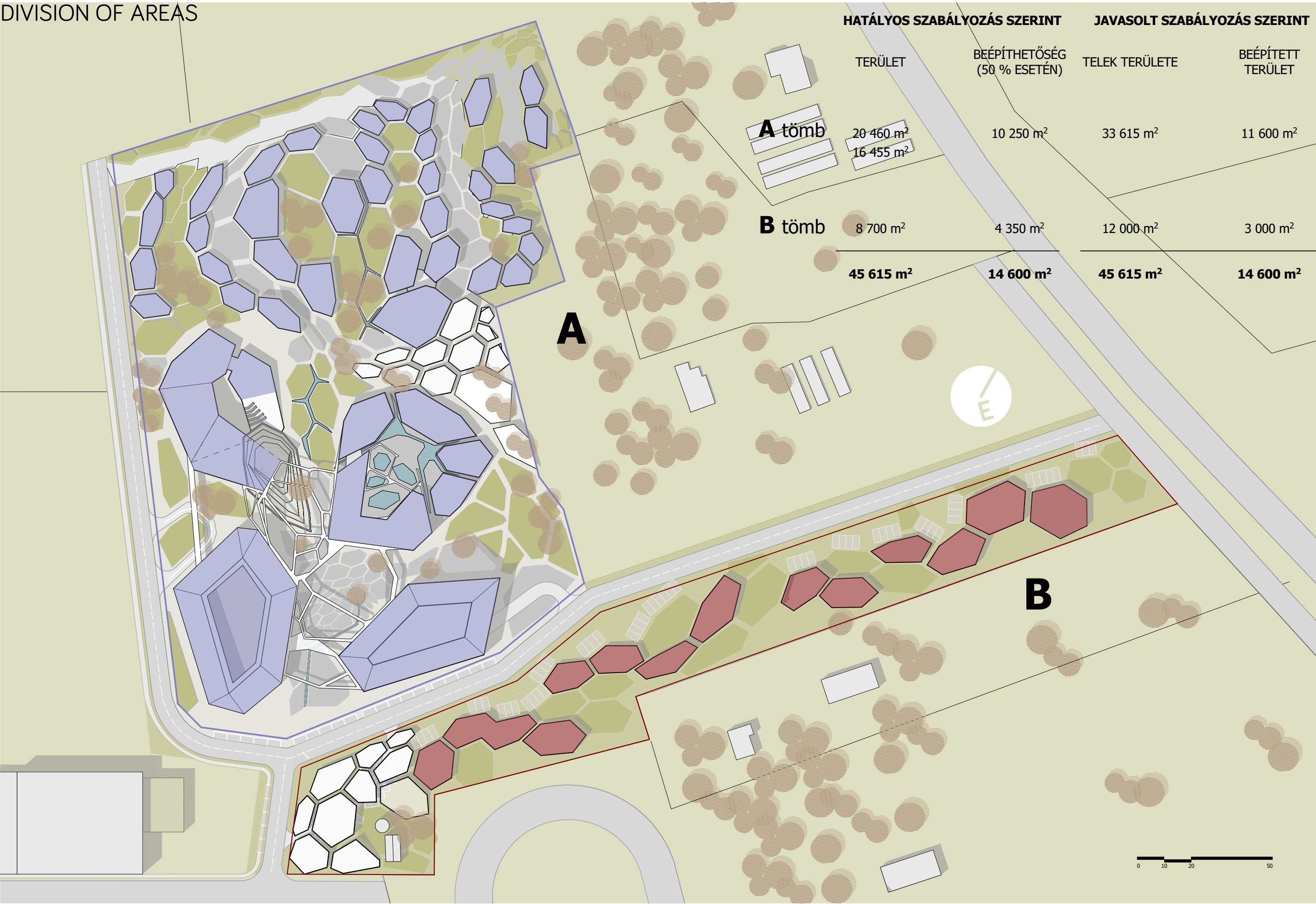
05

SPA VILLAGE

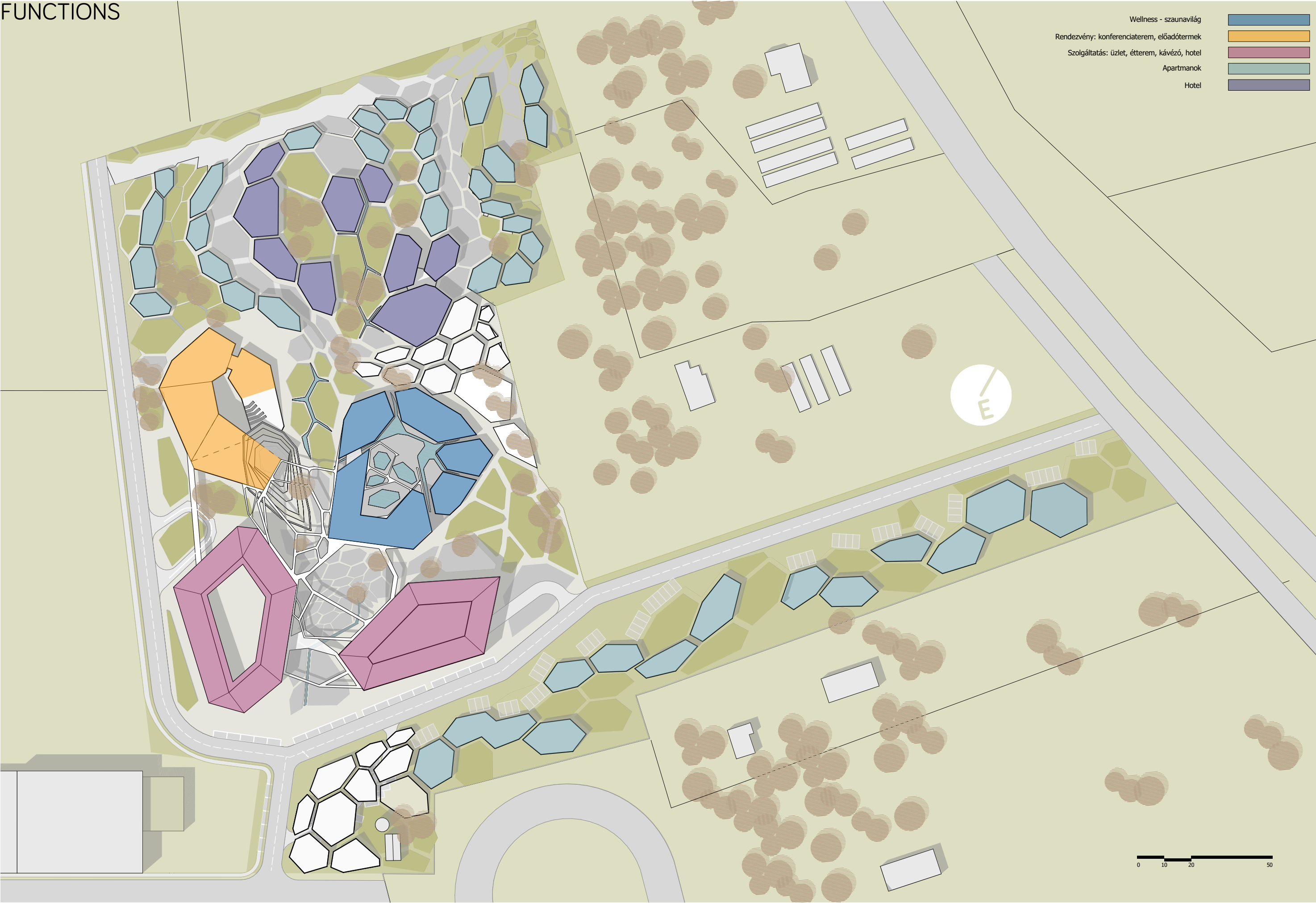
SITE PLAN



DIVISION OF AREAS



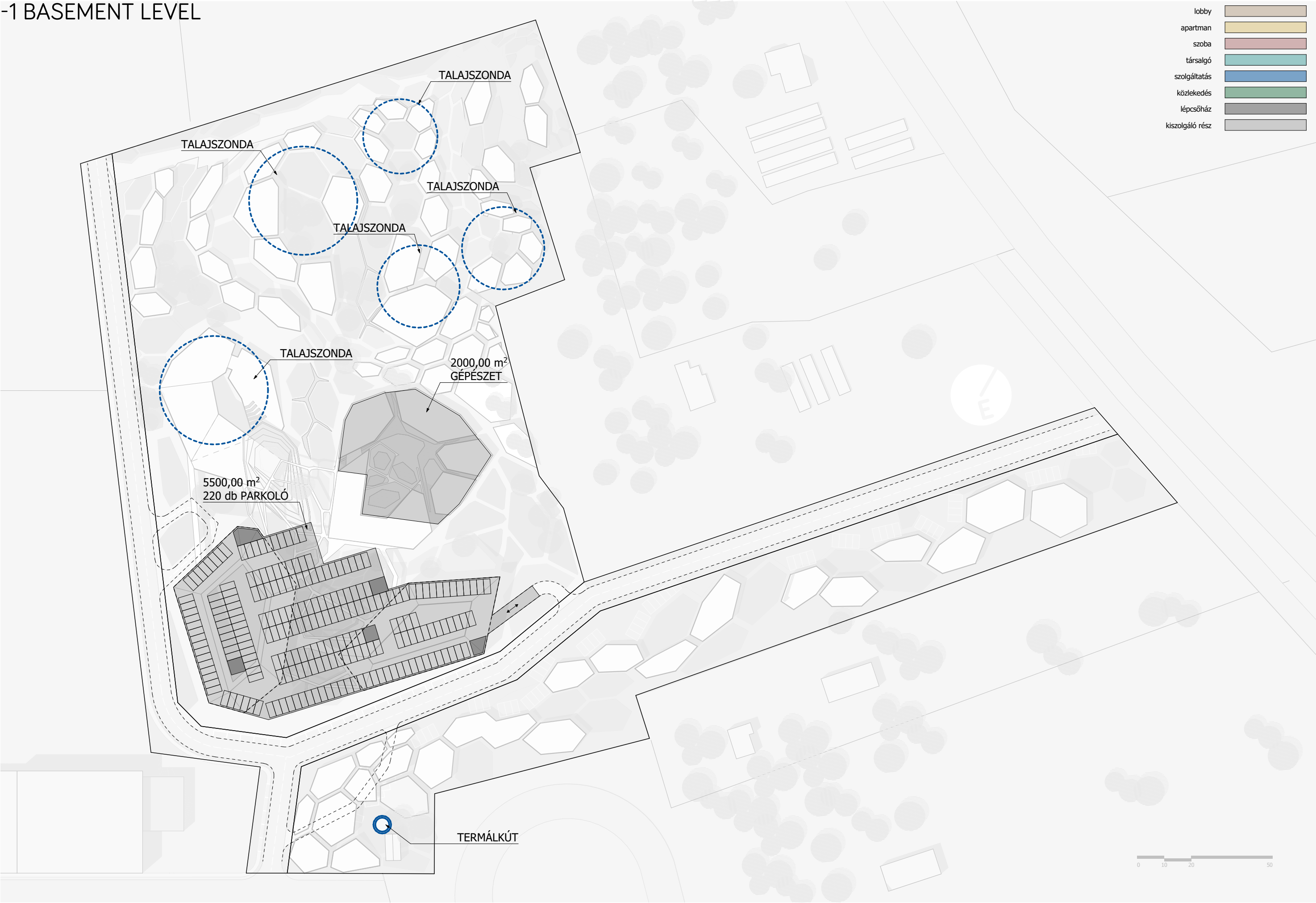
FUNCTIONS



ACCESS



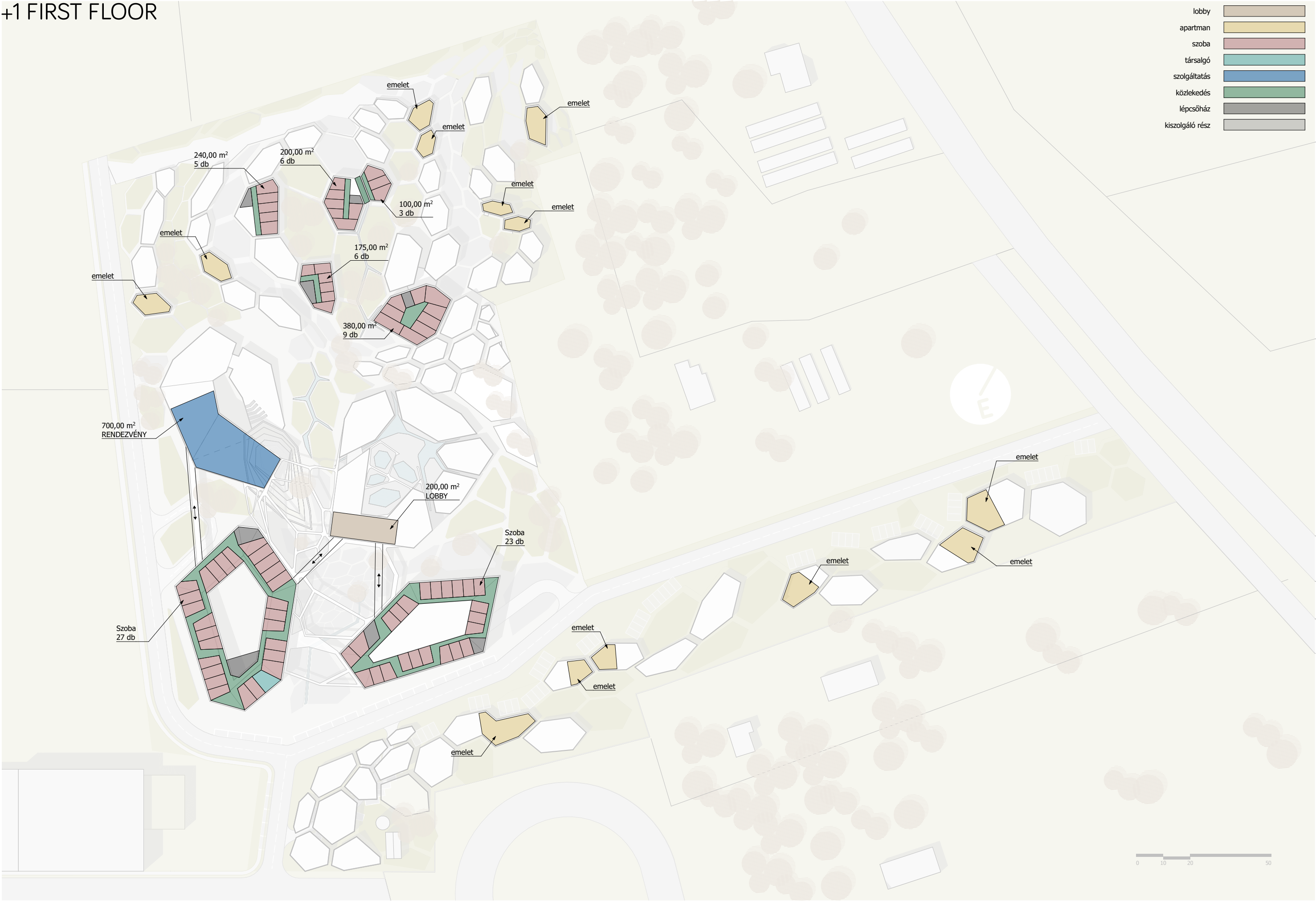
-1 BASEMENT LEVEL



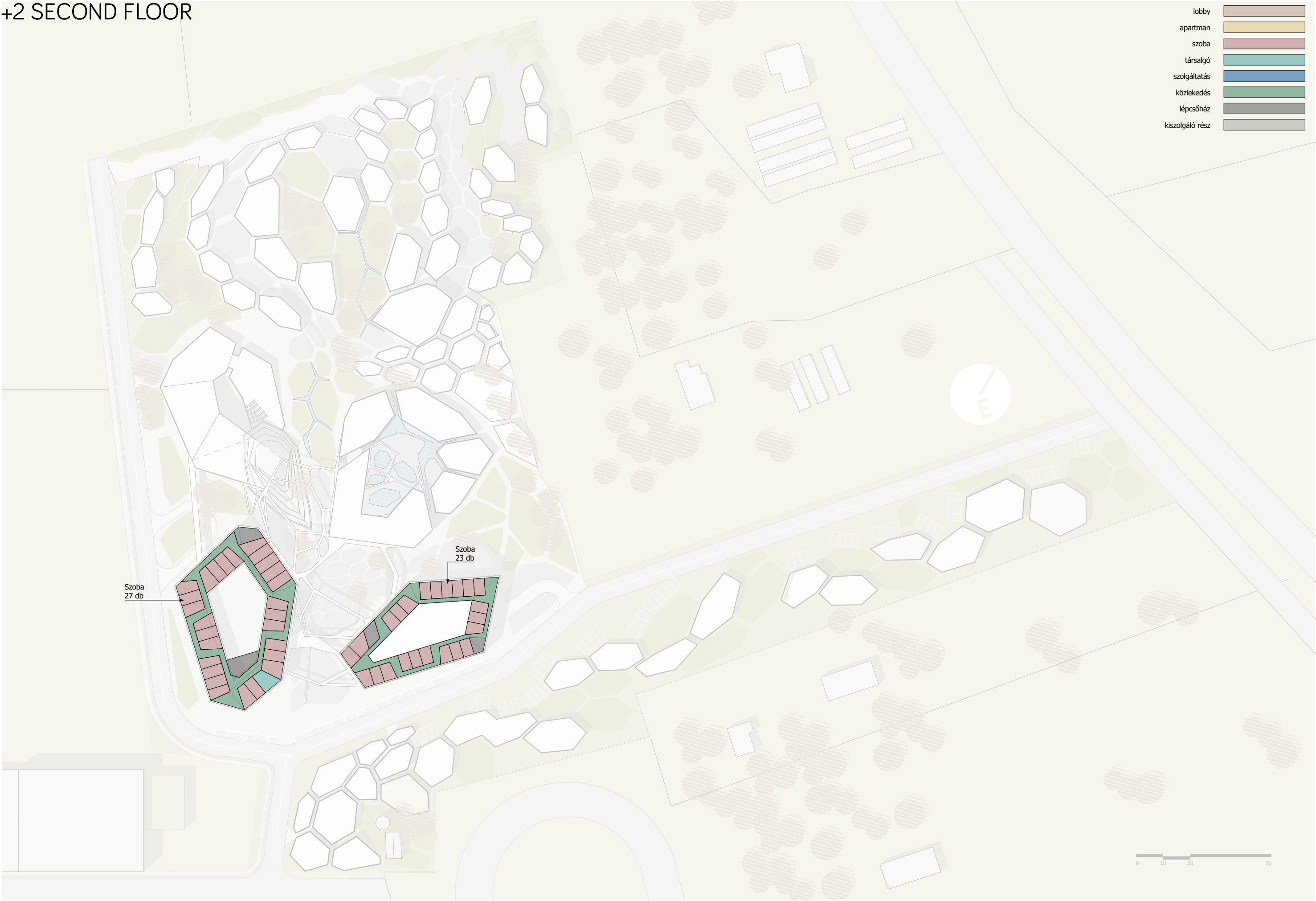
+0 GROUND FLOOR



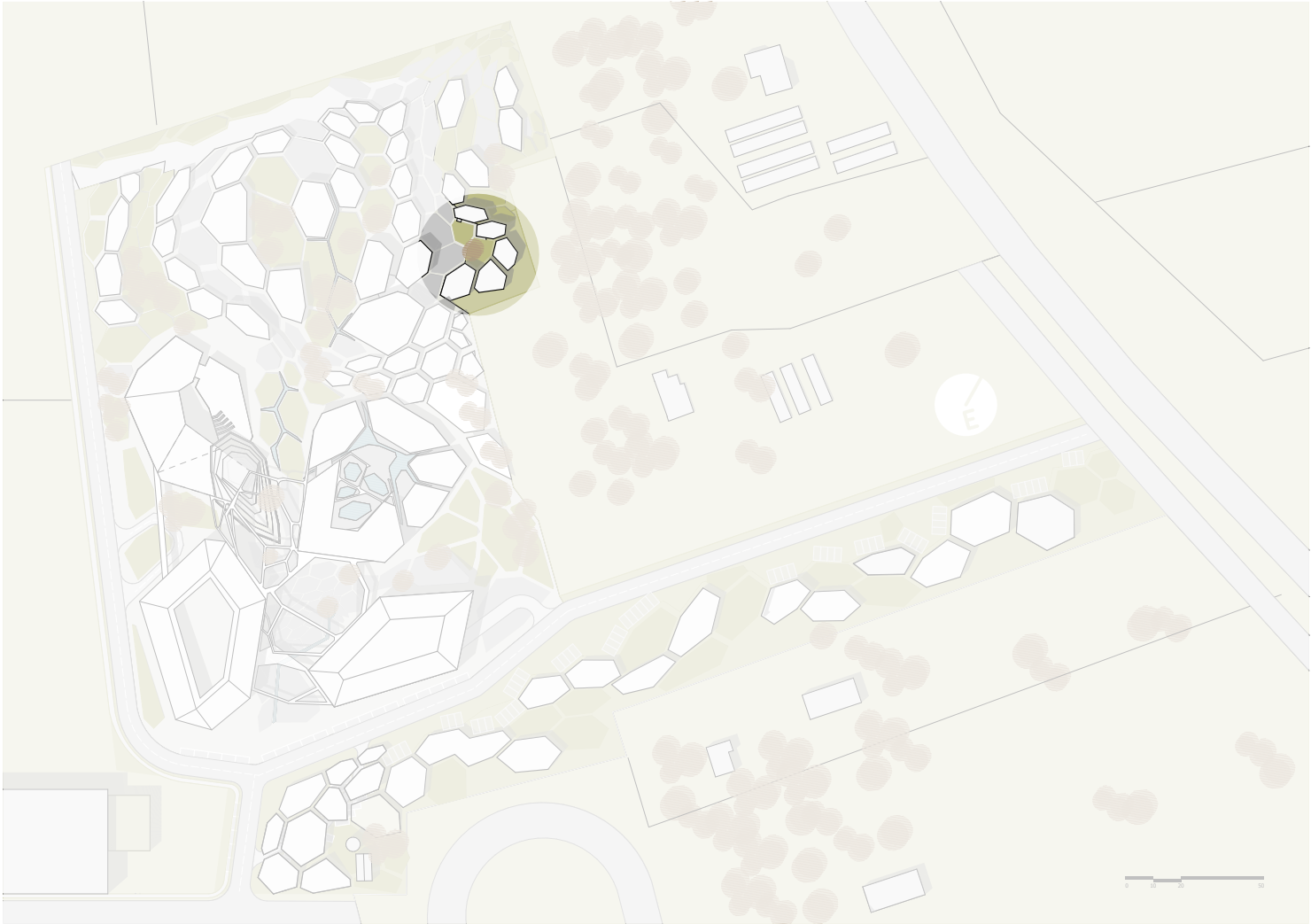
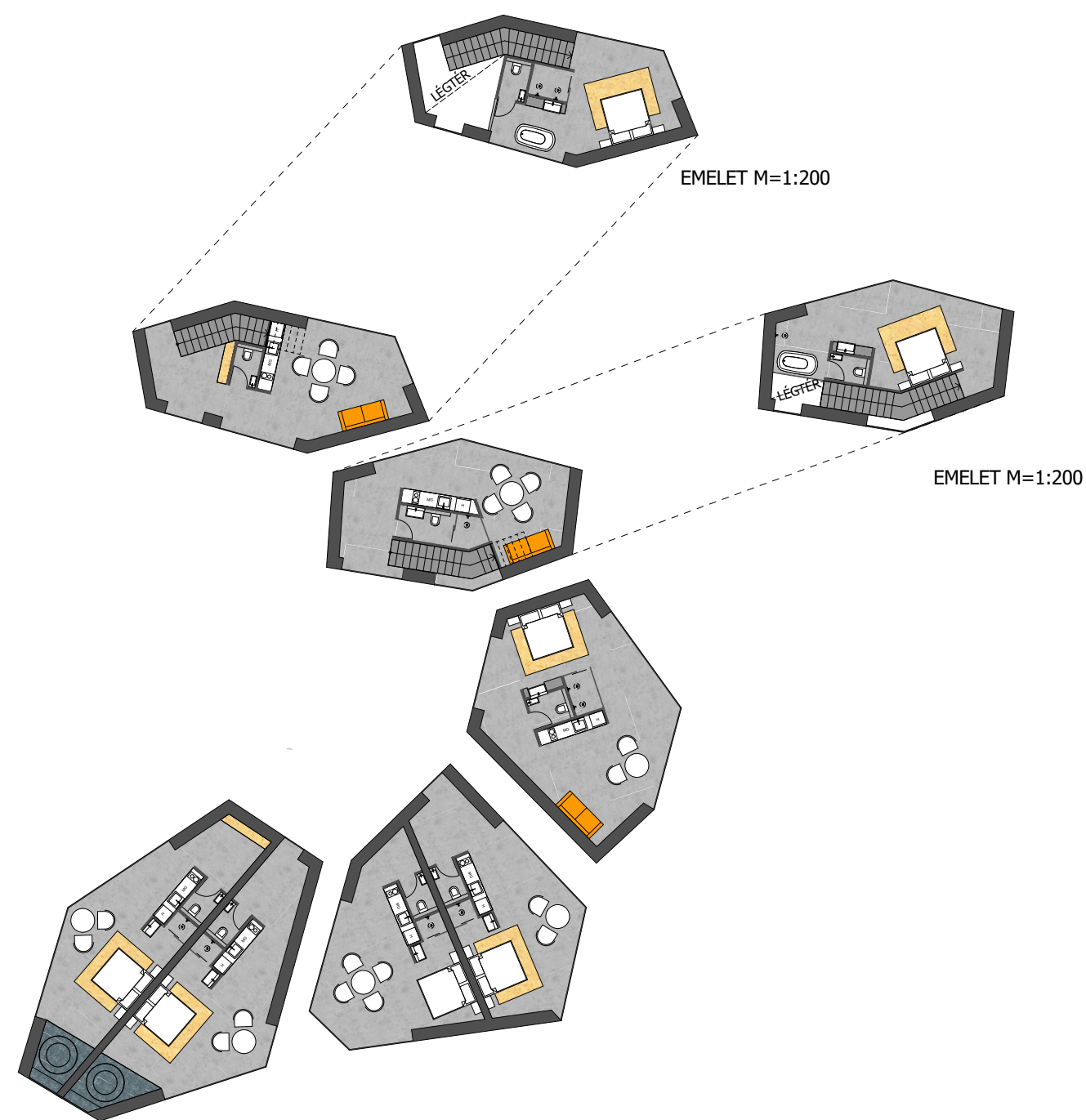
+1 FIRST FLOOR



+2 SECOND FLOOR

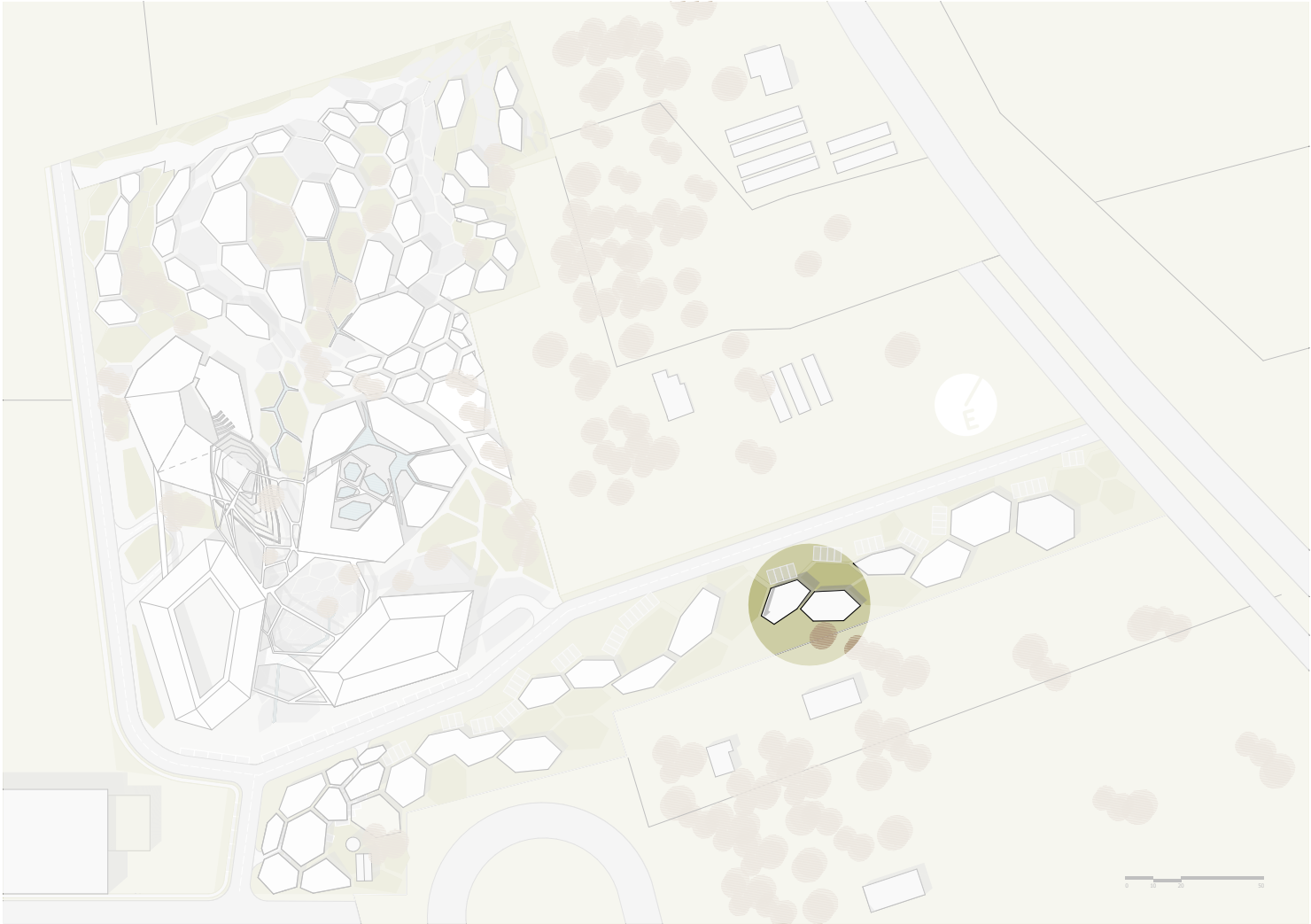


APARTMENT UNITS

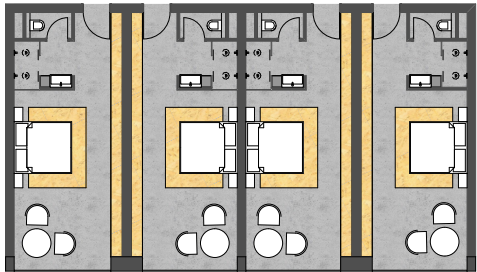


FÖLDSZINT M=1:200

APARTMENT UNITS

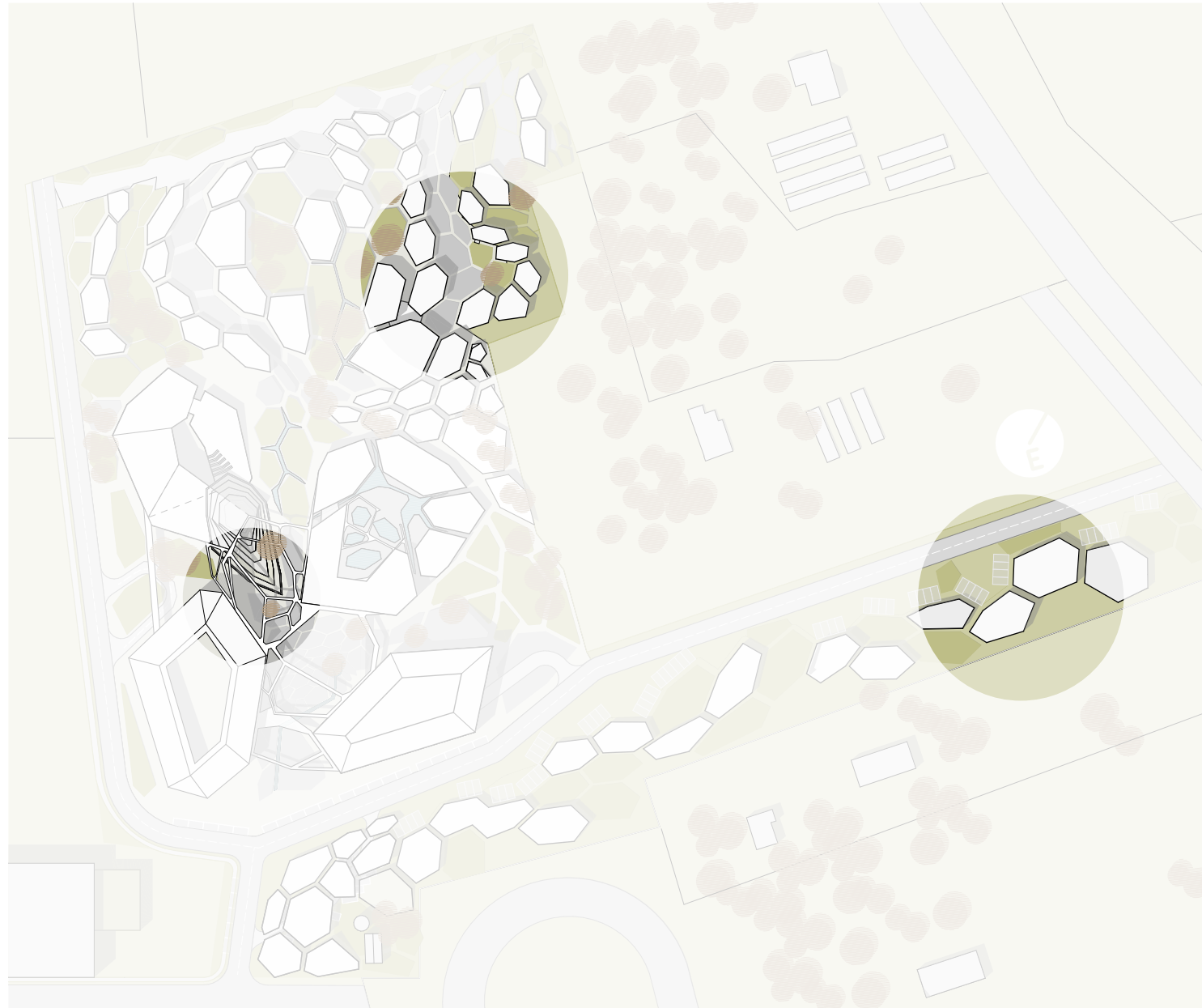


HOTEL UNITS



EMELET M=1:200

06 INSPIRATION



Lawrence Halprin | freeway park | USA Seattle



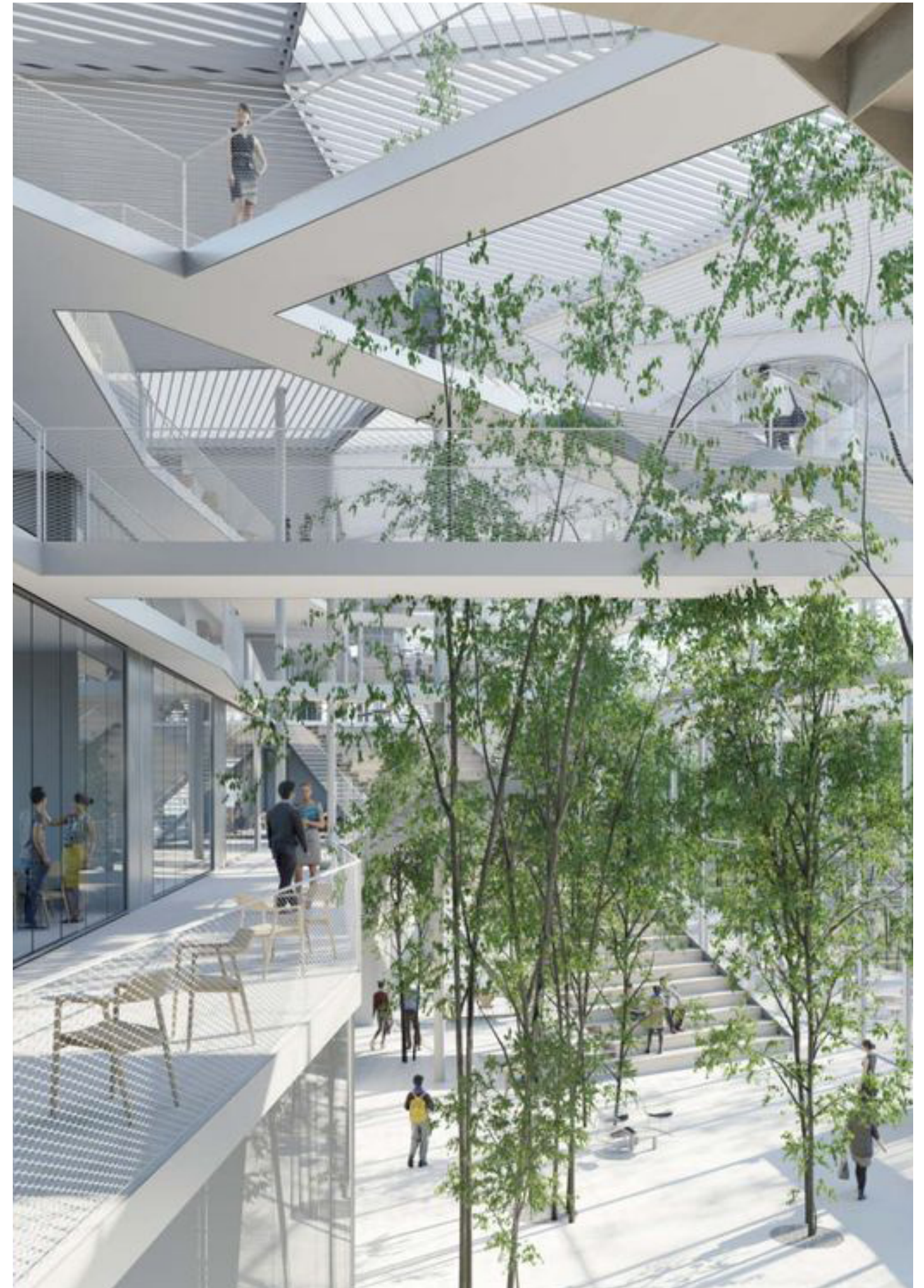
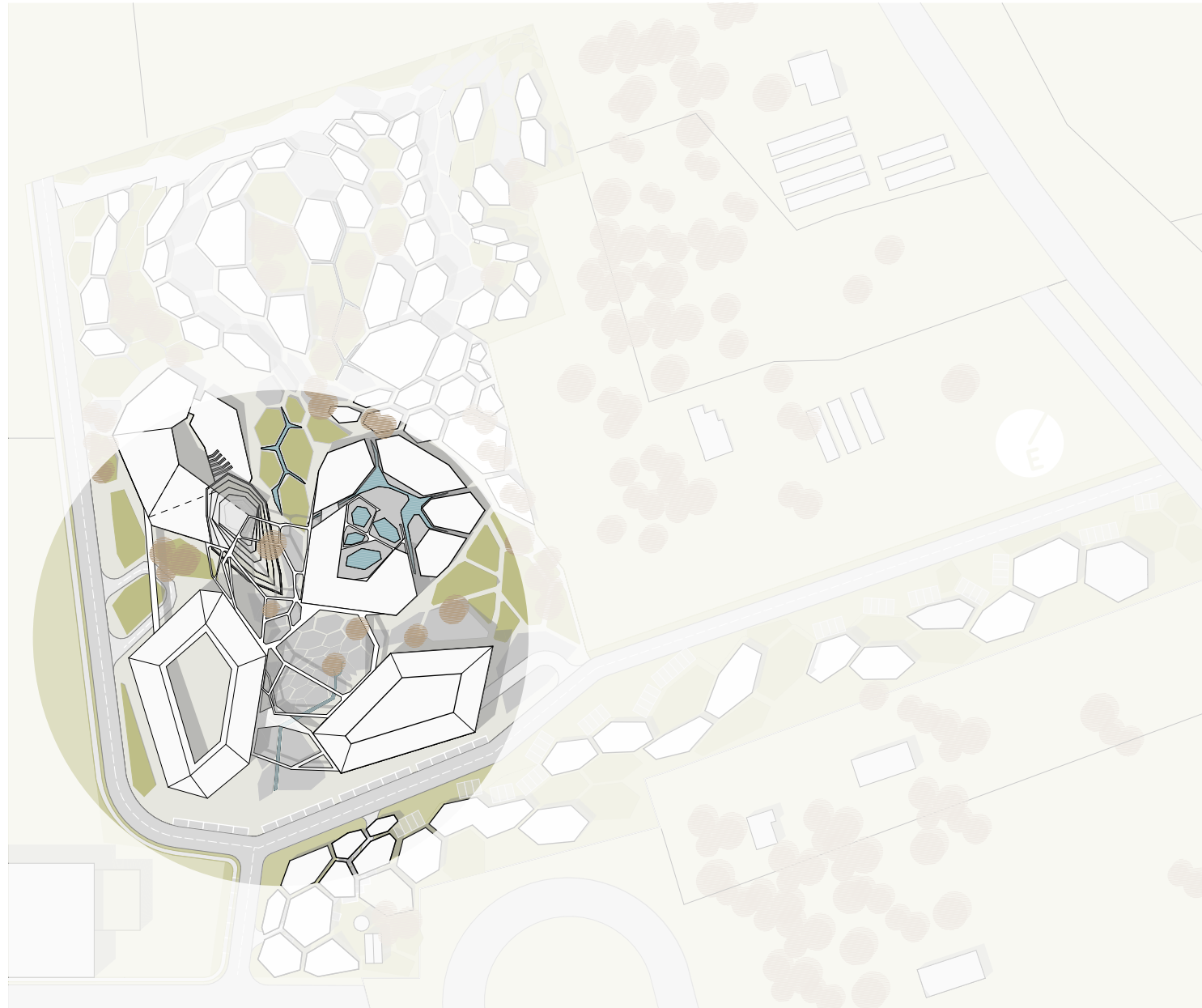
ZAO/Standard Architecture | residential unit | China





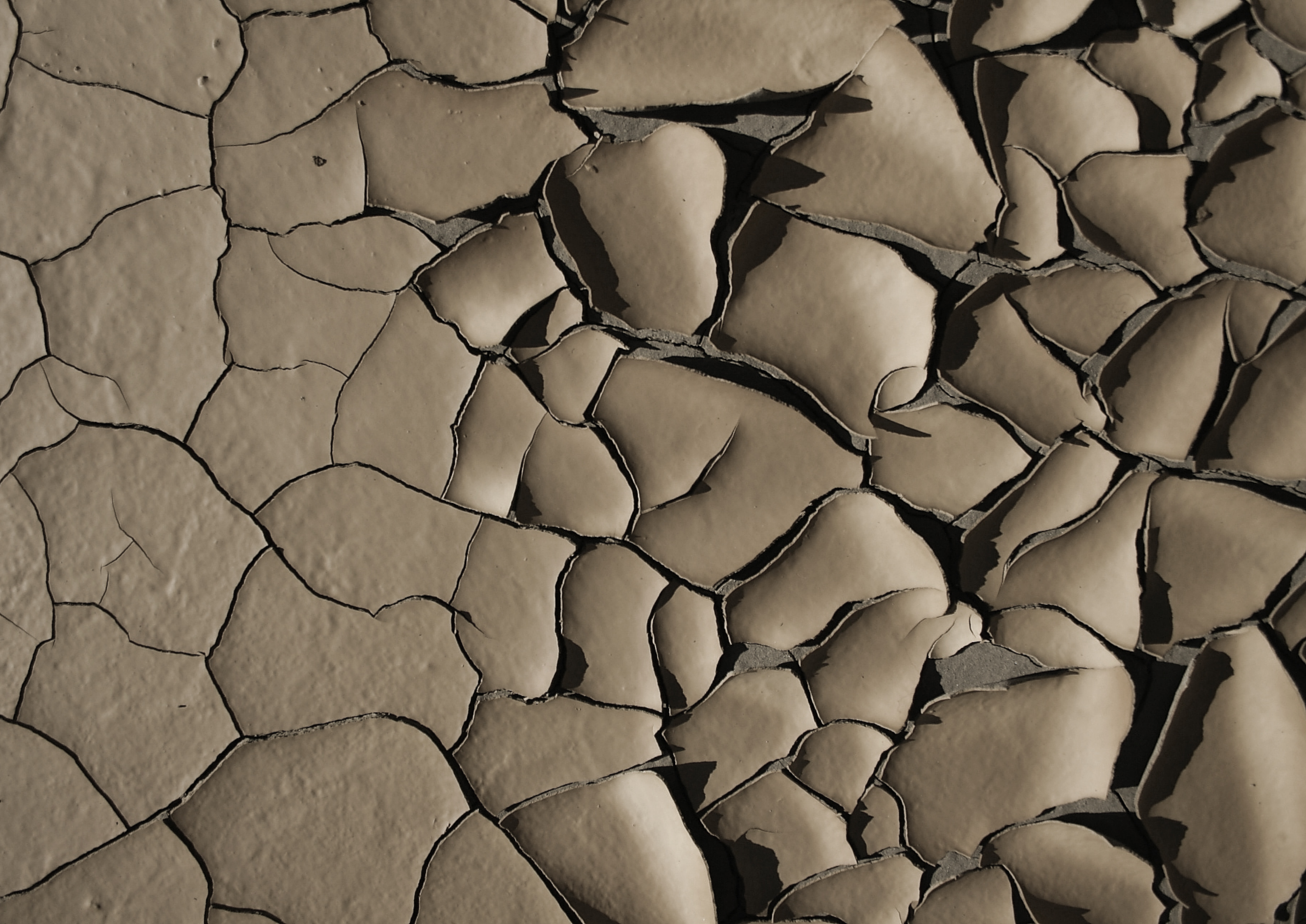
Jardín Infantil Pajarito La Aurora és Ctrl G + Plan:b arquitectos | kindergarten | Columbia

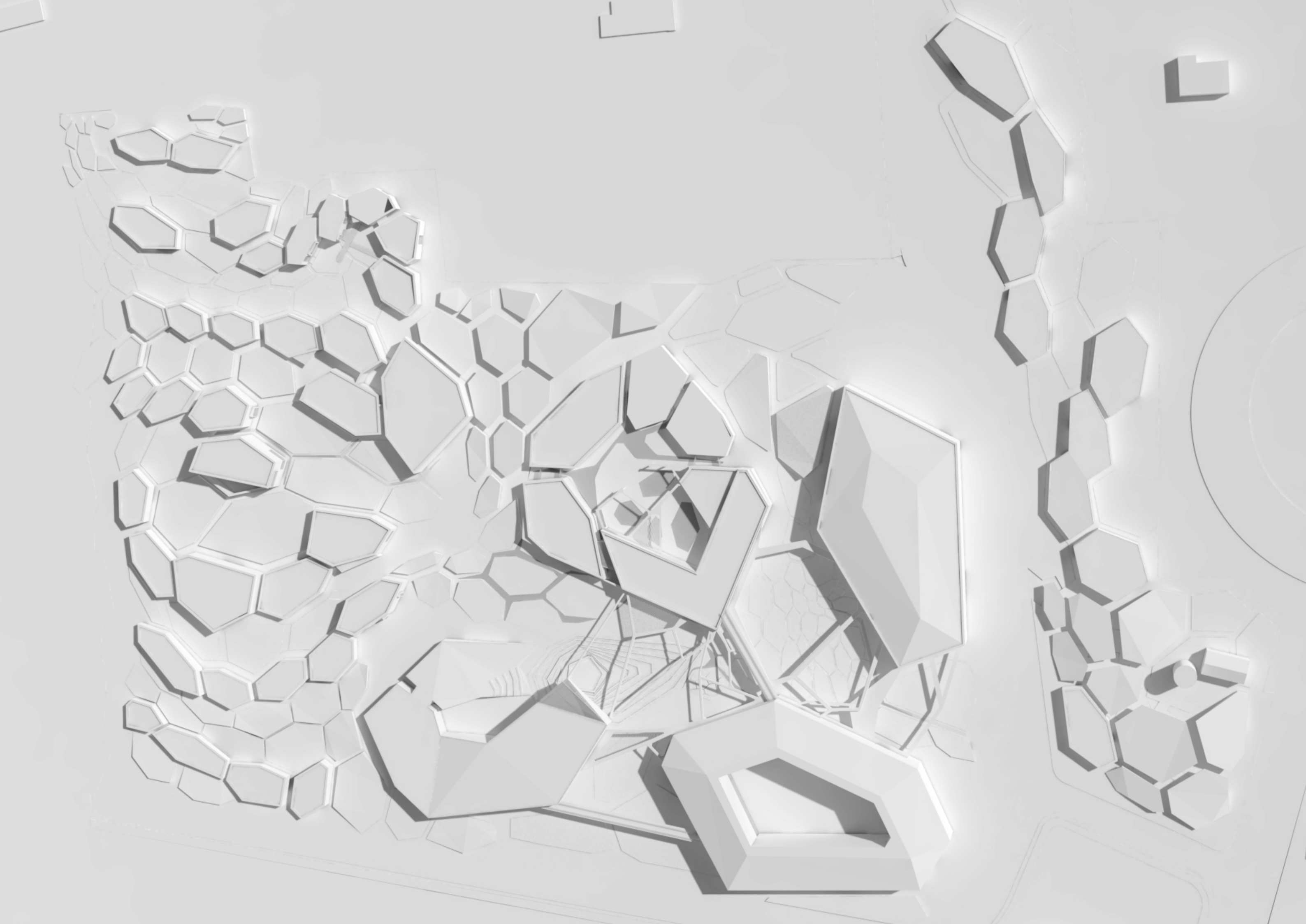


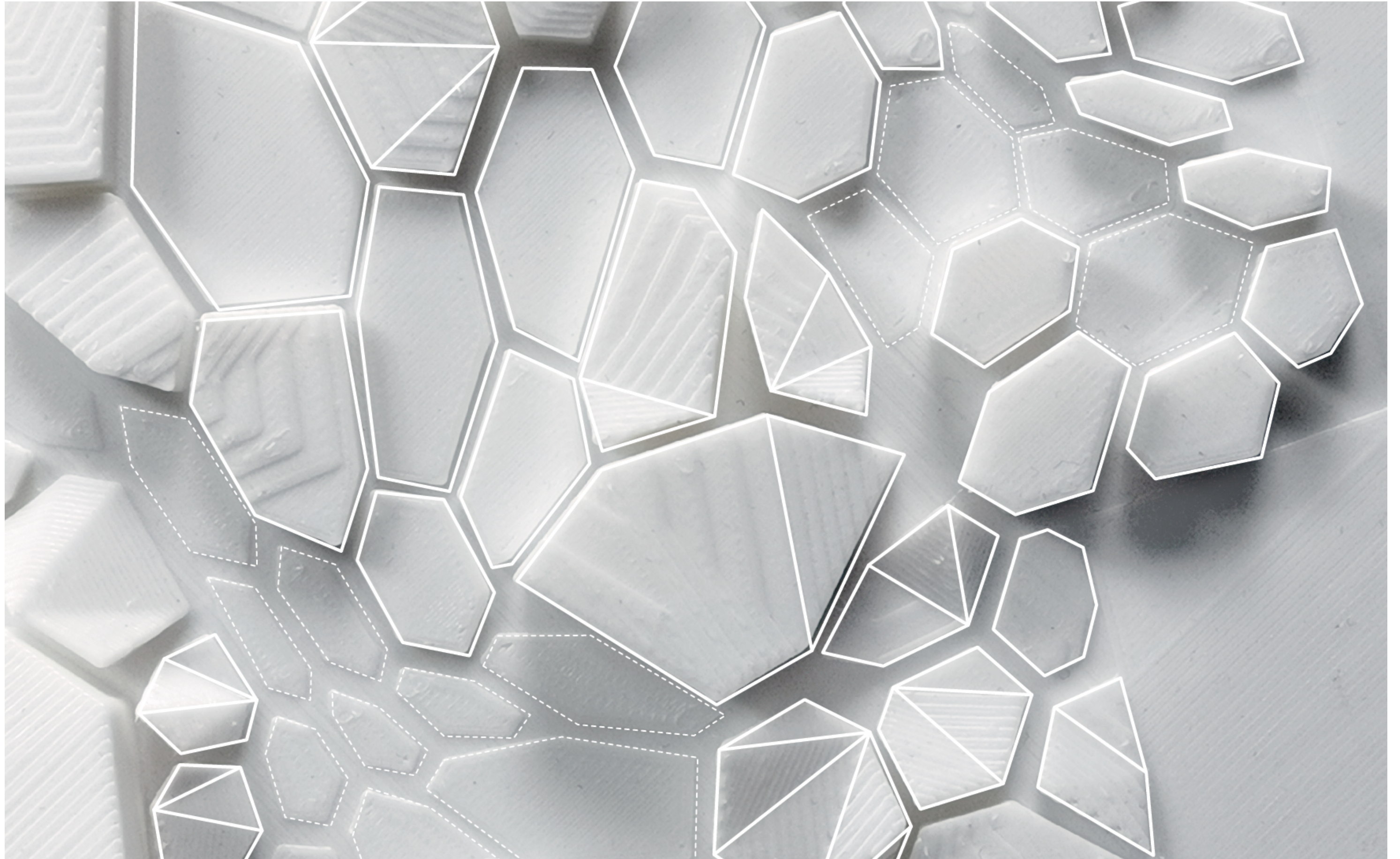


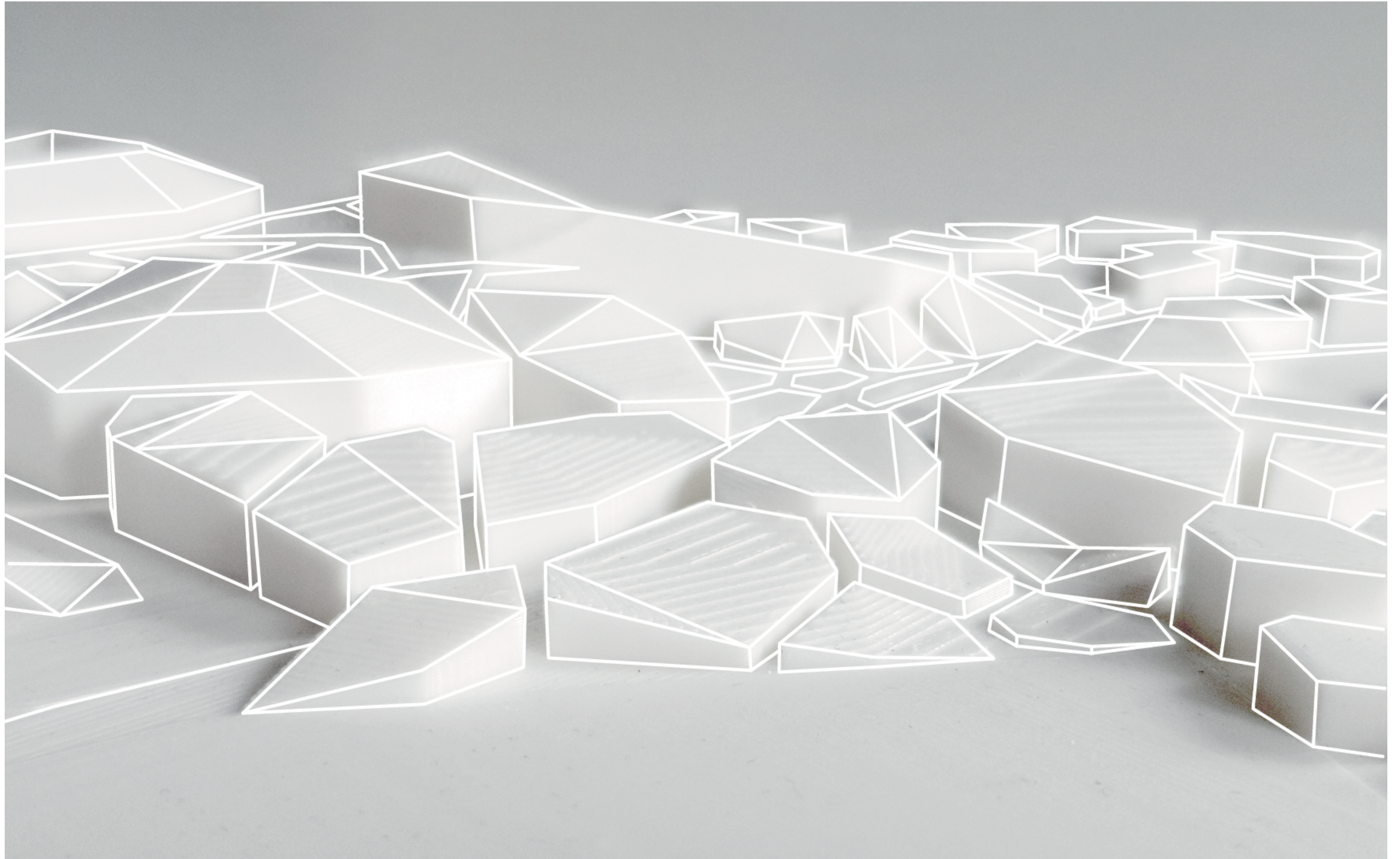
Sou Fujimoto | sport & wellness centre | Paris

07 VISUALIZATION









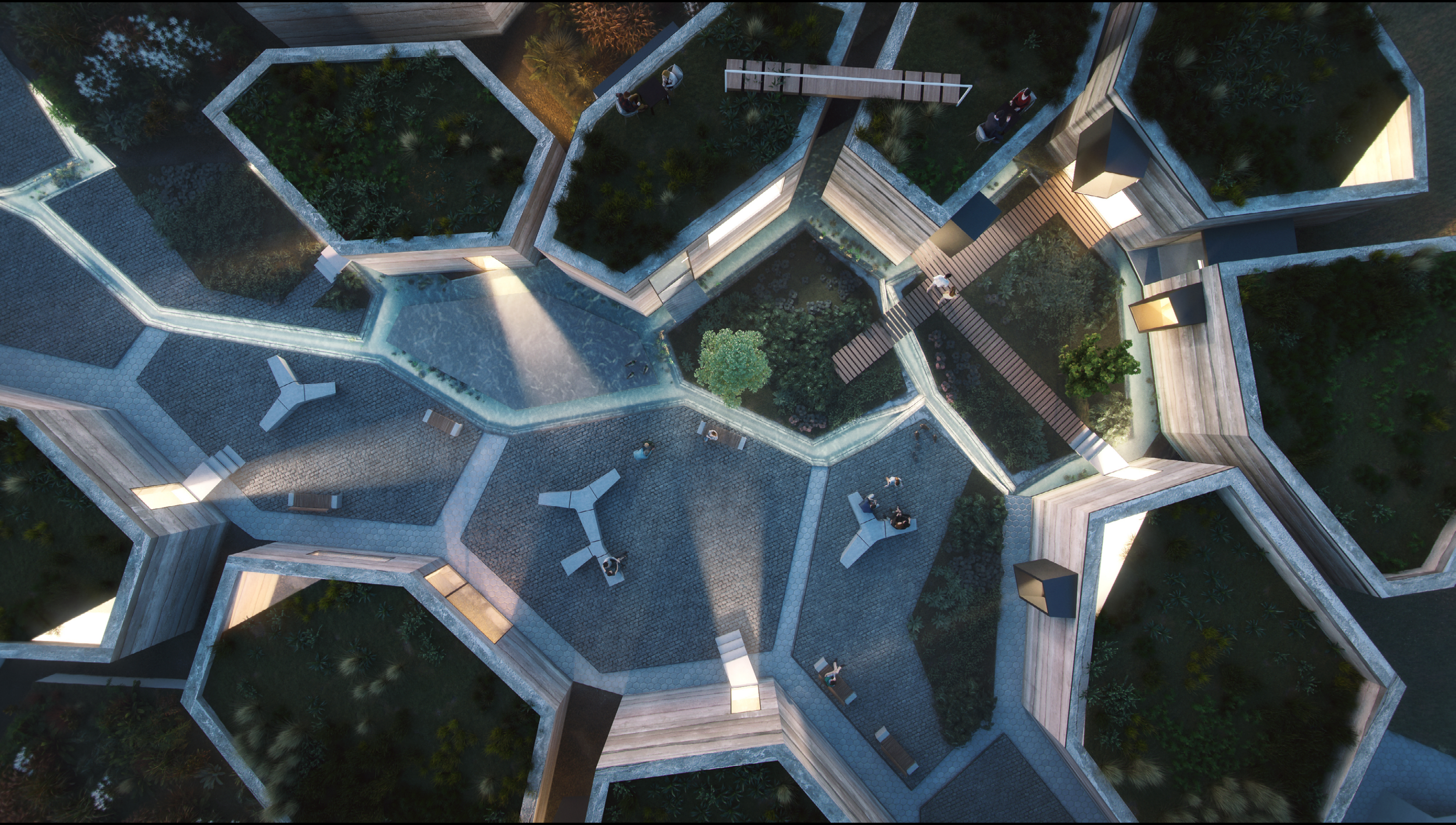


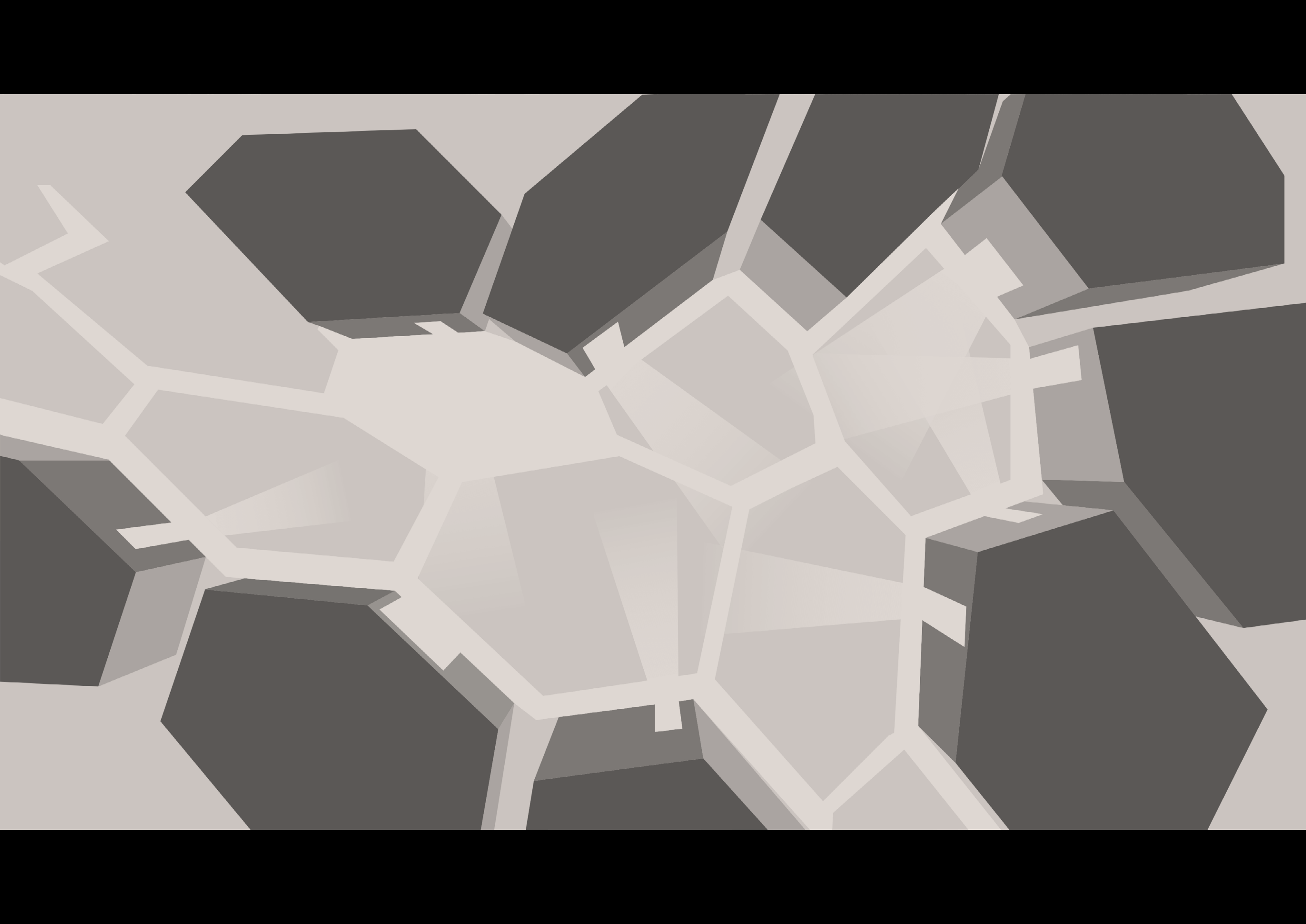














The information in this document is without exception the ownership of (ArtGroup + LAB5) the consortium of „ArtGroup” and „LAB5 architects” according to copyright law. All rights reserved. No parts of the supplied information may be reproduced or transmitted in any form by any means, without the prior written permission of ArtGroup and LAB5.